



ASLA
VERMONT



Magnolia Plantation, Cane River Creole National Historic Park

AWARDS '22 NEWSLETTER

Thank you to our 2022 Sponsors!!!

GRANITE SPONSOR



VICTOR STANLEY™

Create a timeless moment.®

MARBLE SPONSOR



BLUESTONE SPONSOR



PANTON SPONSOR





PRESIDENT'S MESSAGE

TOM HAND, ASLA
VTASLA CHAPTER PRESIDENT

Greetings Everyone!

According to the US Census Bureau, Vermont has the second smallest population in the United States only behind the state of Wyoming. I would argue however, that the work being submitted for the annual chapter awards by our landscape architect members is second to none! Our members show a breadth and diversity of project type, location, style, sensitivity to place, and thoughtfulness around both design and research projects.

Our members are making an impact both in their local communities, such as Broadreach Planning's "Charlotte Library Rain Garden" as well as across the country with Dubois & King's "Heart of Gardiner Master Plan". Context and history play into each project, making them unique representations and reinterpretations of the sites past as seen in Heritage Landscapes "Magnolia Plantation Cultural Landscape Report" and SE Group's "Minnesota Discovery Center". And the attention to design and execution is evident in both JMMDS' "Coastal Maine Contemporary Home" as well as the Award of Excellence Winner- the "Hudson Valley Modern" by Wagner Hodgson.

Hanging in my office is ASLA's Strategic Plan Graphic "Finding Our Future". This graphic summarizes the shift in focus that national is taking- focusing specifically on the people and the important work that we do as landscape architects and members of the national organization. This year's Chapter Awards seem to naturally address so many of the high-level points of the new Strategic plan- from focuses on "People & Culture", "Pride" in our people and our work, to designing with "Purpose" so that each project has a deeper meaning, and taking small steps to address "Climate Action" on each of our projects.



I encourage you all to reference the Strategic Plan graphic to continually see how your work and professional career can continue to impact and educate the public about the work that we do as landscape architects. And of course- please enjoy reviewing the rich details of our award winners from the 2022 VTASLA Chapter Awards!

Best,

Tom Hand

VTASLA CHAPTER AWARDS

THE 2022 AWARDS

The Vermont Chapter of the American Society of Landscape Architects (VTASLA) awarded seven projects completed by Vermont Landscape Architects in its biennial Awards Program. The Awards Program honors works in landscape architectural design, planning, communications, or research completed by members of VTASLA or for projects completed within Vermont by members of out-of-state American Society of Landscape Architects (ASLA) members. The awards were judged by an impartial jury of five landscape architects from the Alabama ASLA Chapter.

In response to the outstanding quality of the awards submissions, the jury gave two “Awards of Excellence,” the competition’s highest honor. This year the Landscape Architectural Design Award of Excellence goes to the Horse Country Hilltop Retreat in Wassaic, New York designed by Wagner Hodgson Landscape Architecture in Burlington, VT. The Planning, Research and Analysis Award of Excellence goes to the Minnesota Discovery Center in Chisholm, Minnesota, completed by the SE Group, also of Burlington, Vermont.

The winners were honored at an on-line awards presentation. Eugenia Martin, FASLA, president of the national American Society of Landscape Architects, presented the awards.

VTASLA 2022 AWARDS

THANK YOU

To our generous and thoughtful jury members from the Alabama ASLA Chapter.

To our event and chapter Sponsors.

To our hard-working Awards Committee, Jim Donovan and Beau Doucette.

To all firms who submitted to the 2022 awards!

VERMONT ASLA CHAPTER AWARDS 2022

LANDSCAPE ARCHITECTURAL DESIGN

The ASLA Landscape Architectural Design awards recognizes constructed, site-specific works of landscape architectural design.

AWARD OF EXCELLENCE

HUDSON VALLEY MODERN

Completed by Wagner Hodgson Landscape Architecture of Burlington, Vermont

For a private client in Wassaic, New York.

With assistance from RES4; Rennia Engineering; Structure Works Construction; Black Electricity

MERIT AWARDS

COASTAL MAINE CONTEMPORARY HOME

Designed by Julie Moir Messervy Design Studio of Bellows Falls, Vermont

For Marth Fuller Clark and Jeffrey Clark residence in Argo Point, Maine

With assistance from Barbara Freeman, Architect; Peter J. White Assoc., Architect; Wright-Ryan Construction; Stoney Brook Landscaping, Inc; and Aquatic Development by Tapley.

CONNECTING WITH NATURE

Completed by Terrigenous Landscape Architecture of Chester, Vermont

For Laurie and Will Danforth's residence in Grafton, Vermont

With assistance from Will Danforth, Rugg Valley Landscaping, and Hill Construction Group



WAGNER HODGSON LANDSCAPE ARCHITECTURE

Hudson Valley Modern

Wassaic, New York

Located in the Taconic Mountains of New York, this hilltop residence is sited for long views of surrounding horse pastures, meadows, mountain vistas and nearby forest preserve. The project includes the landscapes surrounding a main house, pool house and equestrian barns. Working closely with the architect, the design of the landscape takes a minimal approach. Terraces and plantings are designed as a visual extension of the architectural features, with walls of stone and steel referencing the broader agrarian landscape. Meadow areas were restored with native species to integrate the residence into the surrounding pasture. Further from the house, horse paddocks and a vegetable garden were sited to utilize the gently sloping hillside.

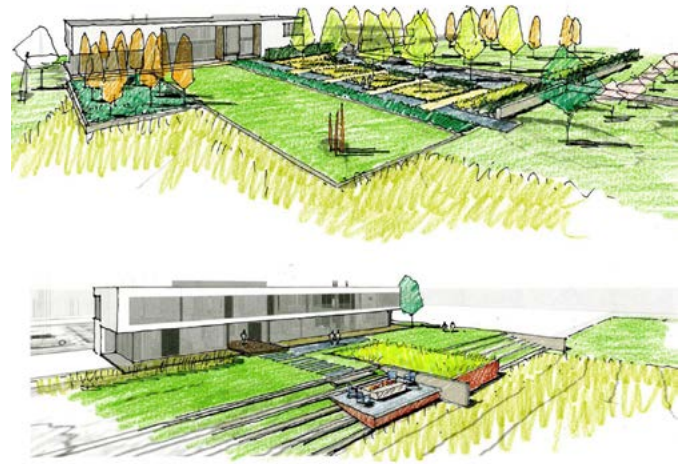
The project purpose was to create a working horse farm and vacation home for entertaining.

The Horse Country Hilltop Retreat property reads as a contemporary residence but at its core this hilltop retreat is a working horse farm. Finding the balance between the utilitarian nature of farm life and the contemporary design aesthetic of the client was the principal role of the landscape architect. The design uses a minimal farmland vernacular with a contemporary simplicity to blur the line between working landscape, recreation, and relaxation. Wagner Hodgson and RES4, the architect, worked in close collaboration to ground the home to the site and broader bucolic setting.

The jury thoroughly enjoyed the plans, analysis, and photographs of this entire project. Everything was put together

with specific intent and that was reflected in the design and detail of the project. Of note, the Jury enjoyed the small ramp within the site steps that they all assumed was for a wheelbarrow or some other wheel-based tool. The detailing was immaculate.

With assistance from: RES4; Rennia Engineering; Structure Works Construction; Black Electricity





JULIE MOIR MESSERVY DESIGN STUDIO

Coastal Maine Contemporary Home

For Marth Fuller Clark and Jeffrey Clark residence in Argo Point, Maine

For a contemporary house clad in granite, lead-coated copper, and wood, with overscale windows that open to blur the boundary between interior and out-of-doors, JMMDS designed an exquisite tapestry of massive granite boulders and mostly native plantings. Stone entry paths and terraces are made of thick granite planks, while wooden decking seems to float over swathes of mosses, ferns, and native groundcovers. The serene pool and terrace, sited to overlook the harbor beyond, are surrounded by salt- and wind-tolerant gardens

This project's purpose was to create a four-season landscape around a contemporary home on a four acre site with challenging weather and natural conditions that would blend the home easily into the site's existing elements.

The team's philosophy for the project was to create a tapestry of mostly native groundcovers, shrubs, and trees that feel as though the house has always been there, while also complementing the architectural palette of the granite, lead-coated copper, and stained cedar façade and interior of the contemporary home. Thus, granite planks cut from local stone lead visitors around the landscape, artfully-placed boulders and plantings. Sheltered courtyards on the south and east sides allowed for the placement of specific ornamental specimen trees requested by the client.

The design and layout of the project intrigued the jury to the fullest. Everyone on the Jury loved the amount of texture and plant variety used throughout the project, along with the hardscape materials. They thought this project was a very enjoyable one to judge.

With assistance from: Barbara Freeman, Architect; Peter J. White Assoc., Architect; Wright-Ryan Construction; Stoney Brook Landscaping, Inc; and Aquatic Development by Tapley.





TERRIGENOUS LANDSCAPE ARCHITECTURE

Connecting with Nature

Laurie and Will Danforth's residence in Grafton, Vermont

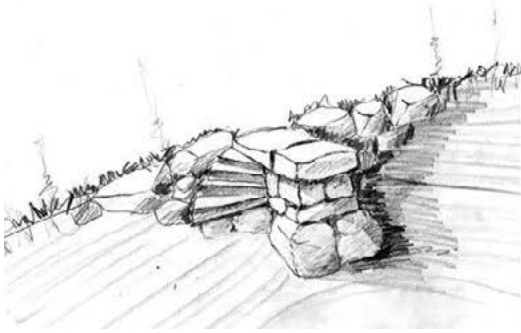
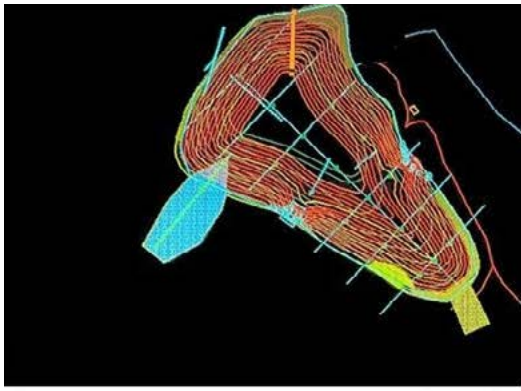
Connecting with Nature converted a steep bank between a home and a nearby brook into pathways, native gardens, stone features, and a comfortable sitting area. To do this, the work included excavating fill material from a pond on the property during winter months, reducing environmental impacts and ensuring the survival of nearby plants and wildlife. This mutually beneficial design improved both human use and the natural environment, resulting in a beautiful and sustainable landscape that improved the clients' connection with the outdoors while enhancing what makes the outdoors valuable.

The project was focused on enhancing the clients' experience of being outdoors, while simultaneously providing support to the native ecology, and while the initial focus was on improving access to a nearby brook, it quickly became much more - an effort to preserve and enhance not only the experience of living within a natural environment, but the natural environment itself.

The project had two main components; improving access down a steep, overgrown bank, and generating the needed fill by draining and deepening a nearby pond. These two elements were linked physically through improved pathways, and aesthetically through the inclusion of unique and organic stone features

The Jury thought that this project was interesting to view due to the overall change to the landscape that took place. The use of native plant materials made the project appealing to the Jury and they could see the overall transformation and enjoyment of the homeowners.

With assistance from: Will Danforth, Rugg Valley Landscaping, and Hill Construction Group.



For Denver, smart waste receptacles mean smart savings.



VICTOR STANLEY RELAY™

STREET LEVEL SENSING™ & WASTE CONTROL SERVICE

Bins equipped with Relay sensors provide the city of Denver with accurate, real-time data on fill level, area environmental conditions, pedestrian traffic and much more. This means more efficient collection, saving the city time and money on fewer unnecessary stops, and providing valuable insights for future planning.

What can we do for your city?

Contact Andrew Hosmer at andrewh@victorstanley.com

VICTOR  STANLEY®

VICTORSTANLEY.COM

LOW IMPACT PRODUCTS *for* HIGH PERFORMANCE LANDSCAPES



STABILIZED STONEDUST®
TRUNKLINE TRAIL



BEACH NOURISHMENT SOLUTIONS
NEWBURYPORT BEACH



CU STRUCTURAL SOIL®
MAIN STREET USA



ENGINEERED SOILS
HARVARD CAMPUS



ATHLETIC FIELD AND
GOLF COURSE MATERIALS

BIORETENTION SOILS • FIBER SOILS • ROOTZONES • STABILIZED STONEDUST
CU STRUCTURAL SOIL • INFIELD MIX • GREEN ROOF MEDIA



READ
CUSTOM SOILS

Experience. Quality. Consistency.



CONTACT US FOR PRODUCT SPECIFICATIONS,
TESTING RESULTS, PROJECT ANALYSIS,
AND PERSONALIZED QUOTES.

JEFF TOOMEY
JEFF@READCUSTOMSOILS.COM
603.235.8420

READCUSTOMSOILS.COM

VERMONT ASLA CHAPTER AWARDS 2022

PLANNING, RESEARCH AND ANALYSIS

VTASLA Landscape Planning, Research and Analysis Awards recognizes the wide variety of professional activity that precedes, guides, or evaluates landscape architectural design, including development, conservation, and preservation plans; government policies, programs and legislature; environmental analysis; and various landscape analysis activities.

AWARD OF EXCELLENCE

MINNESOTA DISCOVERY CENTER

Completed by SE Group of Burlington, VT
For the Minnesota Discovery Center, Chisholm, Minnesota.
With assistance from Architectural Resources, Inc.

HONOR AWARD

MAGNOLIA PLANTATION CULTURAL LANDSCAPE REPORT

Completed by Heritage Landscapes, LLC of Charlotte, Vermont
For the Cane River Creole National Historic Park, part of the National Park System in Cloutierville, Louisiana,
With assistance from WSP USA

MERIT AWARDS

CHARLOTTE LIBRARY LANDSCAPE MASTER PLAN

Submitted by Broadreach Planning & Design of Charlotte, Vermont
For the Charlotte Library, Charlotte, Vermont.
With the assistance of Karen Tuininga, Linda Hamilton, Charles Tegatz and the late Marty Ilick.

HEART OF GARDINER MASTER PLAN

Completed by Dubois & King of Randolph, Vermont
For the City of Gardiner, Maine
With assistance from Arnett Muldrow & Associates.

PERMEABLE

Without Compromise



UNILOCK[®]
PAVERS & WALLS

UNILOCK.COM
1-800-UNILOCK

CALL FOR MORE INFORMATION AND SAMPLES TODAY

720 Collection



Enhance your outdoor living experience



MAGLIN[™]
Site Furniture



SE GROUP

Minnesota Discovery Center Chisholm, Minnesota

The SE Group prepared a master plan for the Minnesota Discovery Center that establishes a mix of amenities, educational offerings, and interesting activities that together form a cohesive and well-integrated experience. The Master Plan builds upon the strengths of the existing facilities, while looking at ways to capture additional revenue to support the Center's mission of telling the story of the Iron Range - "The Land, The Mines, The People and The Work"

The project purpose was to build upon the tremendous assets of the Center, while envisioning expanded facilities and programs to enhance the cultural and recreational offerings at the museum, better serve and support the local community, and draw additional visitation and tourism revenues—all while staying true to the Center's critical mission and vision.

The Jury was blown away by the scale of the project in relation to where the project is located in the northern reaches of Minnesota. They could all see the overall thought process was thoroughly developed from the design layout to the proposed funding process. Everyone on the Jury enjoyed learning about this project.

With assistance from: Architectural Resources, Inc.



The Minnesota Discovery Center gets the grand entrance it deserves!

A new addition to the Research Center building provides a clearly identifiable year-round entrance with info, ticketing, and an expanded gift shop. This new hub will lead visitors indoors through the Archives and direct visitors to the other key destinations: the Museum, the Event Center, and the new Rustic Pig Restaurant. Visitors will have an opportunity to view a gallery of historic objects on display on the way to their destination.

An attractive plaza space with stone seat blocks and native plantings creates a welcoming approach to the building, and a vehicular drop-off area provides convenient access.

A new color and materials palette for the buildings within the Center, which is inspired by iron-rich soils of the native landscape, helps unify the campus and reinforce the sense of place.





HERITAGE LANDSCAPES, LLC

Magnolia Plantation Cultural Landscape Report

Cane River Creole National Historic Park, part of the National Park System in Cloutierville, Louisiana

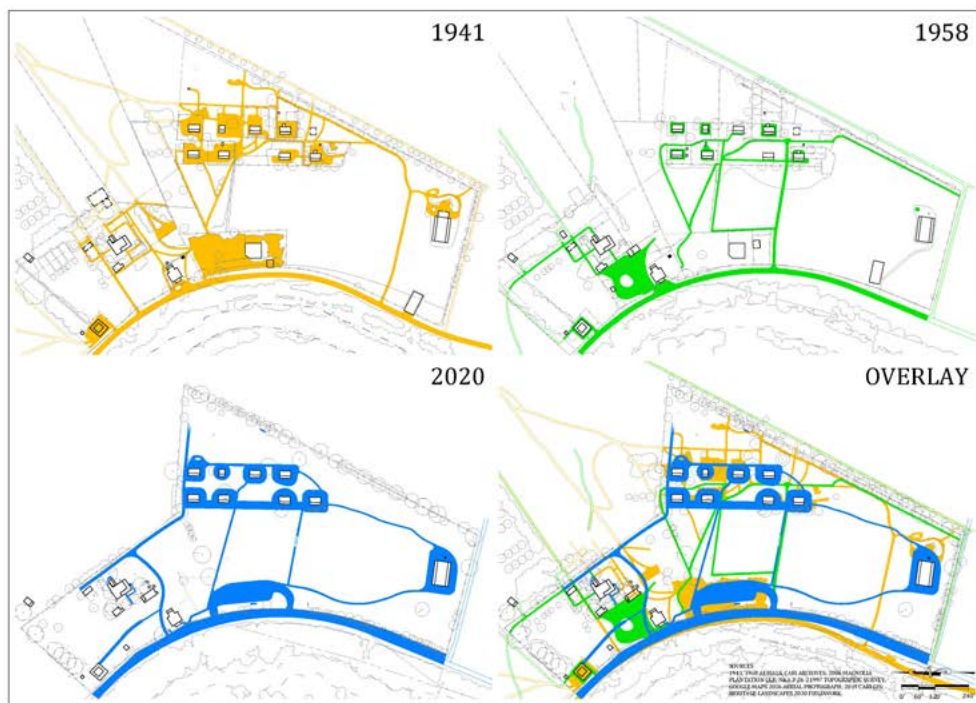
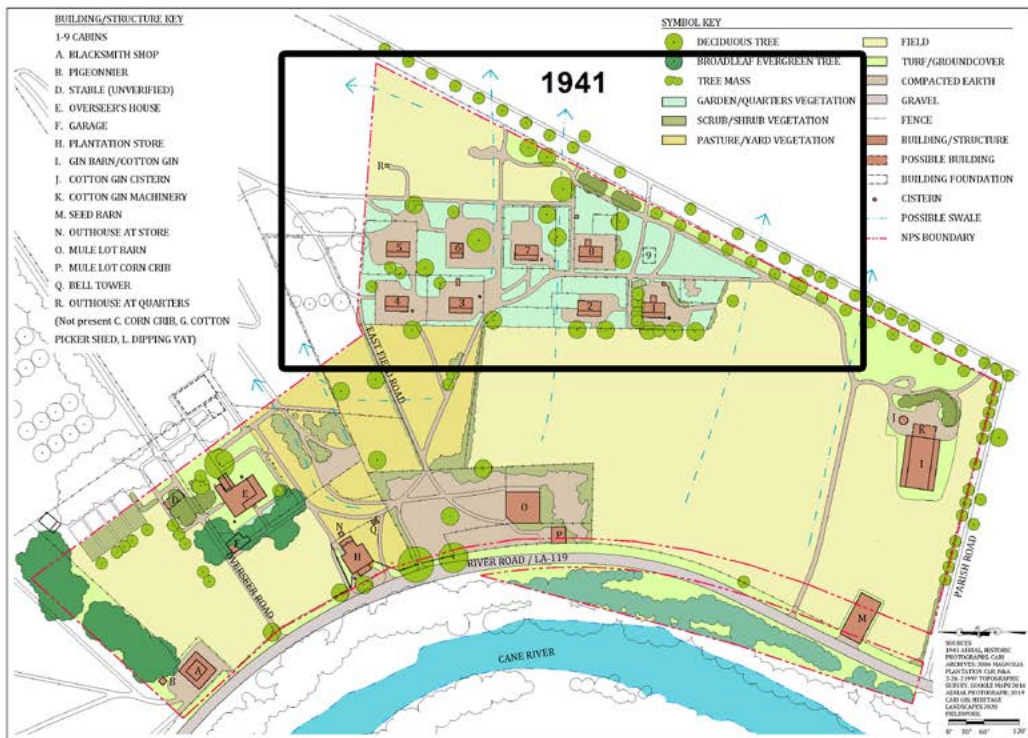
The Magnolia Plantation Cultural Landscape Report (CLR) analyzes the elaborate history and evolved landscape of an eighteenth-century plantation in central Louisiana in order to make stewardship recommendations and schematic designs for a unit of the Cane River Creole National Historical Park. The CLR weaves environmental and ethnographic details to help the National Park Service preserve and interpret a unique, intact example of a cotton plantation that employed enslaved, sharecropper, and resident wage labor through the 1970s

The project was meant to develop a documentation-based report with design recommendations that provides the National Park Service with a detailed basis for day-to-day landscape management and strategic projects to bring a neglected plantation landscape into greater legibility and evoke stories of continually inhabited plantation life from times of slavery to twentieth-century farm modernization.

The Magnolia Plantation Cultural Landscape Report (CLR) analyzes the elaborate history and evolved landscape of an eighteenth-century plantation in central Louisiana in order to make stewardship recommendations

and schematic designs for an 18-acre unit of the Cane River Creole National Historical Park. The CLR weaves environmental and ethnographic details to help the National Park Service preserve and interpret a unique, intact example of a cotton plantation that employed enslaved, sharecropper, and resident wage labor through the 1970s.

With assistance from: WSP USA



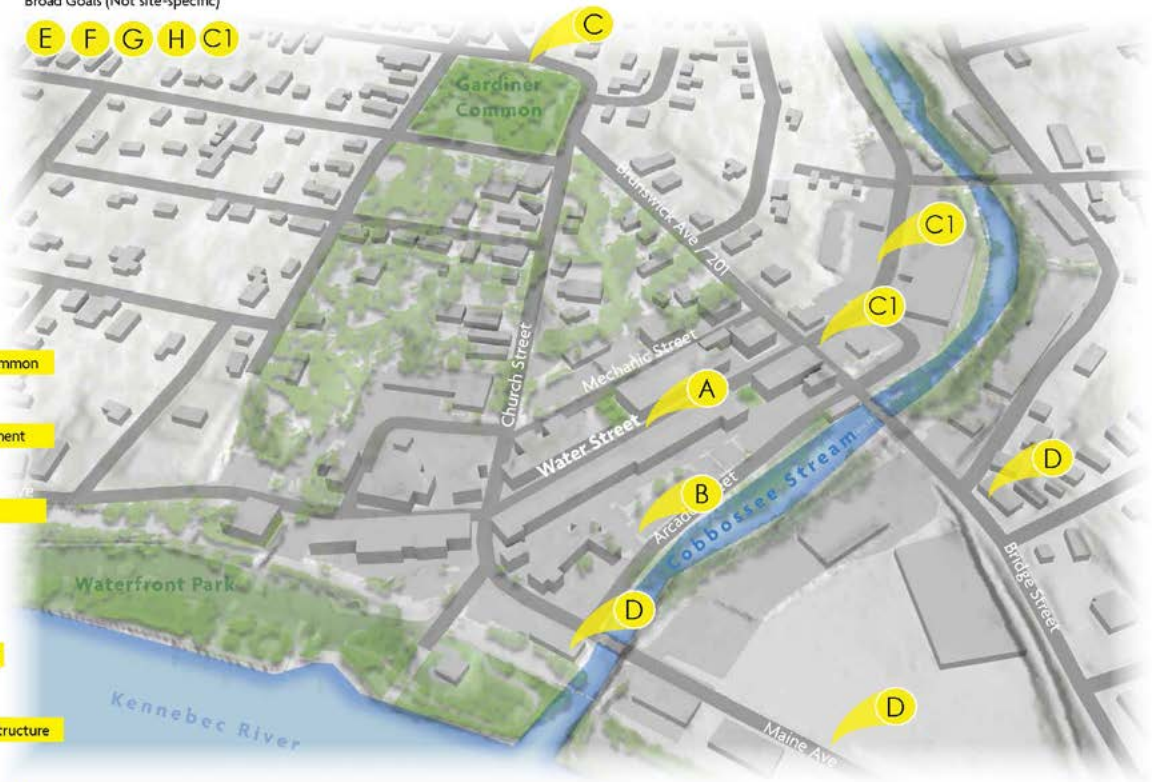
Plan Recommendations

This plan recommends projects that support downtown placemaking, build economic vibrancy and build environmental resilience. These projects are discussed in greater detail within chapter 3 - Gardiner Tomorrow, as well as the implementation chapter. These recommendations include:

- A: Support Downtown Access for All Abilities**
- B: Redevelop the Arcade**
- C: Enhance Downtown Gateways - Gardiner Common**
- C1: Enhance Downtown Gateways - Redevelopment**
- D: Trail to Waterfront Park Connections**
- E: Strengthen Downtown's Identity**
- F: Leverage Downtown's Existing Parking Supply**
- G: Build a Network of Green Stormwater Infrastructure**
- H: Partner in Regional Flood Resilience Studies**

Broad Goals (Not site-specific)

E F G H C1



Economic Vibrancy Goals Supported
 Downtown Placemaking Goals Supported
 Environmental Resilience Goals Supported

DUBOIS & KING

Heart of Gardiner Master Plan City of Gardiner, Maine

Gardiner’s historic district is bounded by the Cobbosseecontee Stream and the Kennebec River and is appreciating new interest and investment after mills and other large institutions closed. DuBois & King is developing a 10-year downtown master plan that improves resilience against coastal and inland flooding, economic sustainability, stormwater capacity and pollution control, and multimodal accessibility. Through a series of public and specific stakeholder meetings, D&K is partnering closely with the city to complete a plan with an inclusive engagement process that reflects the needs and requirements of a diverse set of residents, businesses, and state agencies.

The purpose of the plan was to create a plan that envisions a future for Downtown Gardiner that is more resilient in the face of future flooding events, with a stronger economic engine, and redevelopment that extends the unique and historical character of downtown to adjacent streets at the urban core of Downtown Gardiner.

The Master Plan’s vision for Gardiner’s Downtown of tomorrow proposes strategies around transportation, green assets, identity, and economy.

The Jury really thought this project was well organized. The documentation and research along with the visual representation of the project were clear and easily understood.

AWARDS 2022

Arcade Tomorrow

This proposal re-imagines the Arcade through four key changes:

1. Downtown through McKay Park

With McKay park's ongoing redevelopment, future arcade improvements could extend the park and plaza space into the Arcade, creating opportunities for an accessible and memorable entry into Downtown through trails and green space. In addition, secondary pedestrian circulation could be added through improved sidewalk access at the southern edge of the Arcade, north of the utility access drive.

2. One way parking circulation

Through conversion of the 2 way 90° parking stalls to a series of alternating one way 60° parking stalls, public parking access could be significantly expanded, with the addition of nearly 20 spaces from the current condition.

3. Rain Gardens

The green parking islands illustrated in this plan are envisioned to be designed as sunken rain gardens, storing and cleaning stormwater runoff from Water Street and surrounding buildings before it flows into the Cobbassee.

4. Snow Storage

Illustrated in lighter green, the edges of parking bays are intended to act as snow storage points to ease plowing. Envisioned as recessed green spaces surrounded by blade-mountable curbing, or even simply painted delineation, these spaces could serve as snow storage and expanded green space separate from the rain gardens.

5. Patio Zone.

Public private partnerships could convert the utilitarian backside of waterstreet into attractive patio spaces, with storage for utilities and covered parking below.



The construction and extension of these patios would require a public/private partnership, as many building owners property extends little farther than the building footprint. This concept is also envisioned to create designated dumpster / fuel / utility areas that could condense the unattractive but required utilities for these buildings.



112 parking spaces

Western Gateway Redevelopment

The 2021 improvements to the Bridge Street Corridor by Maine DOT have improved curbing and brick sidewalks, improved road paving quality and updated crucial infrastructure.

However, the addition of the slip lane (right hand turn only lane) southbound on Bridge Street towards Water Street has negatively impacted the economic potential and walkability of this important cross street and downtown gateway. The sole purpose of this intersection design is to move vehicles through the intersection more quickly. Gardiner Downtown's economy and public safety would benefit from slower traffic moving through this intersection, not faster.

This portion of a parcel lost to the intersection expansion is critical to the viability of the Main Street and increasing the foot traffic downtown. Though the timing may be poor immediately after the recent changes to the intersection, the town should look towards the future and engage with the DOT to remove the slip lane and work with the private sector to develop this corner lot.

With a fourth building on the corner, this gateway to Historic Downtown Gardiner can increase value and tax revenue of all area, much more so than can a unimproved parking area.

In addition, such a project could open up additional development opportunities along outer water street, extending the downtown district along Western Water Street.

This privately owned parcel at 2 Bridge street was a former gas station, and now is an open lot. Though access management requirements and environmental permitting will impact any development on site the potential of this site should not be ignored.

The .27 acre site is compact, accesses Water and Arcade Street, and is located outside of the historic overlay zone, but within the traditional downtown district. Built to compliment the existing character of the downtown, a future development here could be commercial, residential, governmental, or institutional in nature. The former use as a gas station is no longer permitted according to current zoning regulations. The community should set the vision for the building and make sure their objectives are feasible from an economic perspective.





BROADREACH PLANNING & DESIGN

Charlotte Library Landscape Master Plan

Charlotte Library, Charlotte, Vermont

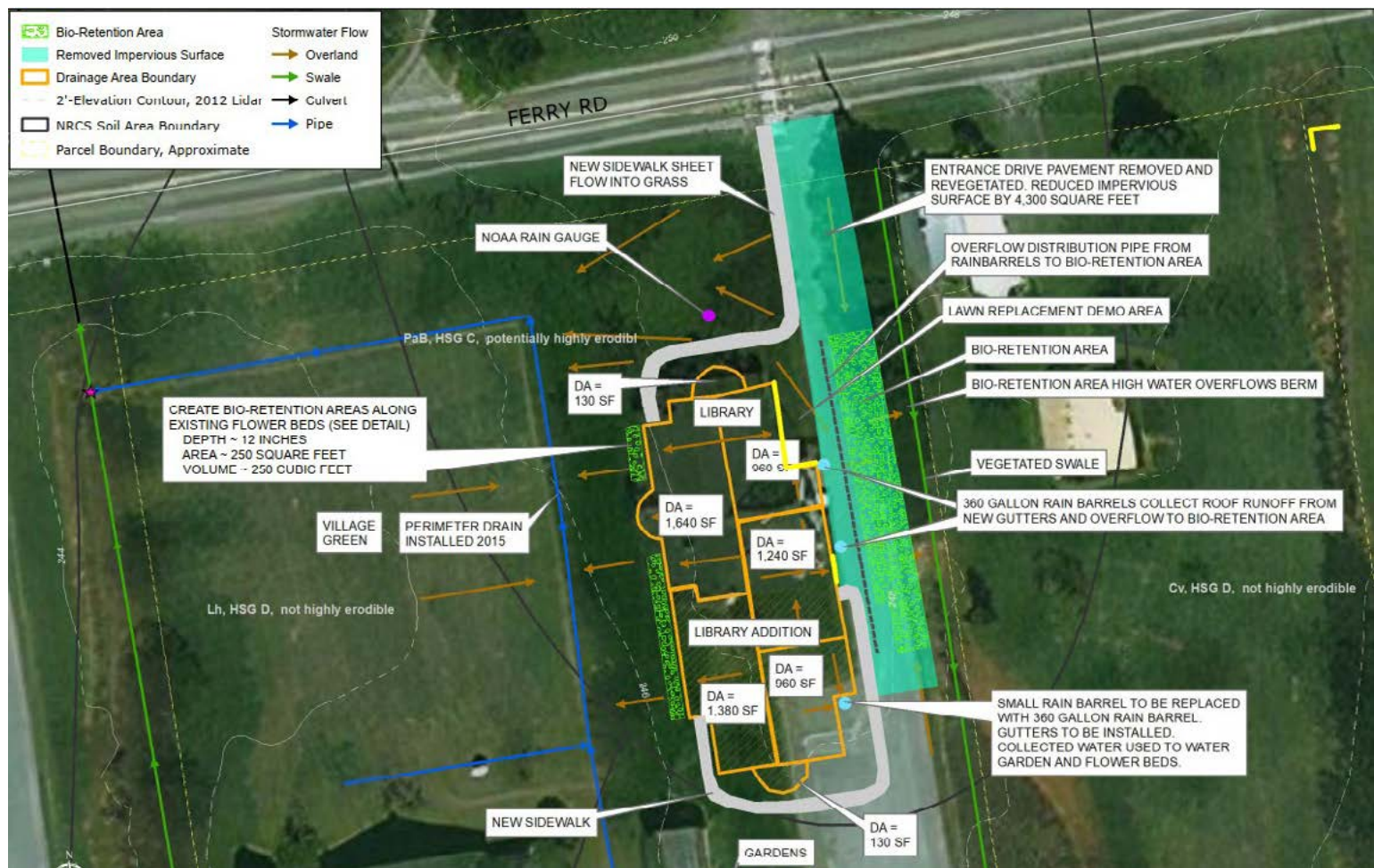
The Charlotte Library Landscape Master Plan project created, in a very public process, a series of educational team workshops, classes, and community events that engaged group learning and creative dialogue to plan and install, with volunteers, a green stormwater management infrastructure and a permaculture-based landscape as part of the expansion of the Library. Over 50 community members participated directly in one or more educational activities associated with the project over the course of a year and countless more library patrons watched and read educational panels as the rain garden and landscape were planned, installed and began to thrive around the well-used Charlotte Library.

The overall purpose of the project was to use the development of a landscape and stormwater management plan for the expansion of the town library as a public process that would educate the community and position the development and installation of green infrastructure and a sustainable landscape around the library as a series of instructive opportunities the Charlotte Library could offer the Town's residents.

This project was not a typical planning study, but rather it was a planning and educational process, using the creation and initial installation of a landscape master plan for the expansion of the existing Charlotte Library.

The Jury enjoyed seeing the community engagement and participation on this project that really educated and engaged everyone.

With assistance from: Karen Tuininga, Linda Hamilton, Charles Tegatz and the late Marty Ilick.





**TROWEL
TRADES
SUPPLY**
A GHS COMPANY



AWARDS 2022



landscapeforms®

A Modern Interpretation of Traditional Design

Ashbery is a beautiful modern interpretation of historic forms in high-quality lighting that sparks an emotional connection to the past but performs, looks and feels authentic for our time. It brings together advanced LED technology and optics with an homage to traditional-style lights that have a special place in the American lexicon.

Nadene Worth, Vermont
 1.800.430.6206 x 1325
 nadenew@landscapeforms.com

DESIGN. CULTURE. CRAFT.





Manufacturers Representative Serving Vermont, New Hampshire, Maine
 www.Swaneylighting.com Office 207-883-7100
 info@swaneylighting.com
 Vermont - Chad@swaneylighting.com 802-363-0621



ASLA

VERMONT