



ASLA  
VERMONT



Shelburne Farms

**FALL '22 NEWSLETTER**

# Thank you to our 2022 Sponsors!!!

## GRANITE SPONSOR



## MARBLE SPONSOR



## BLUESTONE SPONSOR



## PANTON SPONSOR



## PRESIDENT'S MESSAGE

TOM HAND, ASLA  
VTASLA CHAPTER PRESIDENT

Fall 2022- President's Message

Greetings All,

This past spring, I had the opportunity to participate in planning and hosting the New England Regional Climate Summit in collaboration with neighboring chapters including BSLA (Boston + Maine), New Hampshire, and Rhode Island. The summit was an initiative of ASLA's Climate Action Plan to begin having regional conversations around the issues and opportunities facing individual ecoregions of the country. Vermont may face increased precipitation and flooding, increasing temperatures (70 degrees in November!), and even the effects of climate migration as people exit cities and move to rural areas. Other states such as Massachusetts and Rhode Island have a heavy focus on the impacts of potential sea level rise.

In October, I participated in ASLA's national advocacy day along with members Lucy Thayer and Scott Wunderle. Our discussions with Congressional Leaders focused on promoting support for the Excess Urban Heat Mitigation Act (H.R. 7534) and the Outdoors for All Act (S. 2887 & H.R. 5413). Vermont's congressional leaders are always very receptive to supporting bills that benefit access to the outdoors and environmental improvements. In fact, Vermont is already increasing funding and availability for urban tree planting initiatives throughout the state in collaboration with the Vermont Urban & Community Forestry Program. This is recognition of both the threat of increased urban heat and cooling and healthful benefits of a mature urban tree canopy.

Despite this wealth of strategic planning, advocacy, and opportunity at the federal, regional, and state level, it still takes the initiative of our landscape architect members to see opportunities on projects to advocate for the environment and public health. Just recently I came across an RFP from a Vermont RPC seeking final engineering design of stormwater treatment for a large urban parking lot. But the only solution was an in-ground collection and filtration system. Is this not an opportunity to combine the benefits of stormwater collection and treatment with the benefits of breaking up the parking area with vegetation to improve both aesthetics and the urban heat effects? When state and regional agencies don't coordinate on the benefits of holistic thinking, then it becomes our purview as landscape architects to advocate for improved solutions that provide a multi-layer of benefits to the project, environment, and community.

Which I guess is my way of saying- don't be afraid to speak up and use your knowledge and passion as landscape architects to convince your clients, state agencies, municipalities, or fellow consultants to think holistically. The momentum and opportunity for our profession is growing- let's not let it go to waste.

Thanks,

Tom Hand



JUNE 2022

## SE Group's Claire Humber Elected to ASLA Council of Fellows

**Prestigious nomination is result of three decades of making landscape architecture central to the comprehensive designing and planning of mountain resorts and recreation destinations.**

VTASLA member, Claire Humber will be elevated to the American Society of Landscape Architect's (ASLA) Council of Fellows during a ceremony on November 13th, 2022, along with 27 other members. Election to the Council of Fellows is among the highest honors the ASLA bestows on their members for their career contributions and achievements within the industry.

Claire Humber, Director of Resort Planning at SE Group in Burlington is recognized for her contributions to the field of landscape architecture and as a ski industry pioneer. Claire joined SE Group in 1991 and has been driving the evolution of the ski industry ever since. Once seen as single-sport winter destinations, Claire has led SE Group's work to help transform ski resorts into thriving year-round outdoor recreational destinations. Claire's work merges the disciplines of landscape architecture's physical planning and design with business and operations strategic planning. Her thoughtful plans for dozens of ski resorts – both large and small – has helped to preserve and maintain these treasured community assets by identifying and maximizing opportunities for viable year-round activities. The results have created financially sustainable, ecologically sensitive, and resilient businesses that are catalysts and engines of economic development. Claire was nominated for the Council Category "Knowledge"—and it's easy to see why. Throughout her career, she has been the go-to expert for resort planning and design, giving keynote speeches and writing for industry-leading associations and publications such as the National Ski Areas Association, Ski Area Management magazine, and the Urban Land Institute.

Tom Hand, VTASLA Chapter President, interviewed Claire on November 6th.

**Tom Hand: Being nominated and elected to the Council of Fellows is quite an honor, but also takes a considerable amount of work by the nominee to submit a worthy application. How does it feel to be elevated to Fellows and what was it like compiling a careers-worth of experience and achievements?**

*Claire Humber: In a word, humbling. I am so honored to be recognized in this way. Compiling the nomination materials was a lot of work but was also very rewarding. I've never looked at my professional experience from the perspective of professional growth or career-building, but rather from a focus of building my expertise so that I could better serve our mountain resort clients and contribute to SE Group's leadership role within the ski industry.*

**TH: How has your role as a landscape architect helped shape your career with SE Group defining the guest experience within the ski area and mountain resort industry?**

*CH: One of the things I love about our profession is the endless opportunities of how our expertise, and of our lens toward the "interconnectedness of all things" may be applied. The guest experience at a mountain resort is just that: an interconnected series of events, of interactions with the built environment, the natural landscape, and people that leads toward a memorable day. My job is to work with our team and our clients to anticipate and design environments that foster these memorable experiences.*

**TH: You were nominated under the Knowledge Category. How does that recognition emphasize the importance of the work you do at the intersection of design and strategic planning?**

*CH: Mountain resorts are incredibly complex systems. They are places of exceptional scenic beauty, rich with fragile natural resources, venues for an endless array of active and passive recreational activities, home to loyal and vested community members, lucrative investment opportunities, and on-going business operations. Working within this world requires an understanding of all pieces of the puzzle; providing any level of planning and design within these complex environments is a great responsibility and demands strategic and systematic thinking. And regardless of where we are in the continuum from strategy through planning, design and entitlements, there is always a need to consider the bigger picture as well as the smallest of details.*

**TH: ASLA's new strategic plan focuses on advancing the recognition of the profession, its members, and climate action on a national stage to educate and provide solutions. How do you see your work with mountain resorts and recreation-based communities evolving to educate clients and the public about sustainable business practices and development? Are we in the midst of a shift in mindset within the ski industry?**

*CH: Yes, though I would counter that the ski industry has always and will always continue to evolve. When I started my career 30+ years ago the conversations were very different than they are today, to the point where many consider "ski" an insufficient label. Four-season outdoor recreation has always been part of the equation, but the more shift toward year-round operations has become much more intentional in the past 10+ years. Sustainability continues to be a more prevalent topic, from both a business and environmental perspective.*

*CH: A lot of our work today is founded within the context of sustainability on some level. We do an increasing amount of multi-season recreation planning with ski areas, in response to the growing need to be more than just "winter" focused. Our mountain planning always includes discussions related to the efficiency of lift and terrain networks, which effects operational expense, energy use, and environmental impact. Master planning always begins with discussions related to natural resources, and our design team is always expanding their understanding and use of sustainable techniques. Financial modeling is always a part of the equation, so that clients can understand how their investments may contribute to business viability over time. We also help our clients interpret data related to climate modeling, so that they can consider how these longer-term factors may influence their near-term decision-making.*

Please join us all in congratulating Claire on this honor and recognition, and continue to follow her thinking on design and planning within the ski resort industry and outdoor recreation.

## SUMMER OUTING AT WATERFRONT WITH BARB FROM MAGLIN



Farmers and Foragers

VTASLA joined Barb from Maglin for a summer social and happy hour at Farmers and Foragers Waterfront in August. We were grateful to connect with Barb again this year and had a great time catching up as we watched the sunset.

Thank you Barb for hosting us and continuing to serve as our Maglin representative!



Enhance your outdoor living experience



## VTASLA CELEBRATES OLMSTED 200!



April 26, 2022, marked the 200th birthday of Frederick Law Olmsted — author, journalist, public official, urban planner and founder of American landscape architecture. Olmsted and his successor firms designed thousands of landscape projects across the country. His democratic vision of public parks and their capacity to bring communities together is more important than ever. Frederick Law Olmsted was a visionary for his time, believing that accessible public space was not a nicety but a necessity.

The national Olmsted 200 campaign engages a creative coalition of landscape architects, design professionals, city planners, public health professionals, conservationists, community leaders, historians and educators to explore the many ways in which Olmsted's values can address today's challenges. Rooted in Olmsted's values of universal access to parks and the health and environmental benefits of open space and resilient designs, the celebration will examine the life, leadership and enduring influence of this American visionary.

Olmsted 200 is managed by the National Association for Olmsted Parks, along with founding partners The American Society of Landscape Architects, The Garden Club of America, Frederick Law Olmsted National Historic Site, City Parks Alliance, National Recreation and Park Association, The Cultural Landscape Foundation, The Trust for Public Land, American Public Health Association and The Landscape Architecture Foundation. Learn more at [www.olmsted200.org](http://www.olmsted200.org)

VTASLA joined the national campaign with numerous local initiatives, beginning with a statewide resolution. On April 22nd, 2022, the Vermont House and Senate passed a joint resolution that recognized April 2022 as World Landscape Architecture Month and April 26, 2022 as Frederick Law Olmsted Day in Vermont. The Resolution was sponsored in the House by Representative, Mike Yantachka and in the Senate by Senators Champion and Sears. This was organized through the advocacy of VTASLA members, particularly Jim Donovan. Additional activities are further enumerated in the following pages of this newsletter and include:

Two tours of Shelburne Farms' Olmsted features led by Patricia O'Donnell and Greg DeVries

Two screenings of the film 'Olmsted and America's Urban Parks', one in partnership with Shelburne Farms and one with the Architecture & Design Film Series sponsored by VTASLA with speaker Greg DeVries

The Doug Crowell lecture featuring a panel of Olmsted experts

Exhibits at the Guilford Rest Stop, Rutland Free Library, and the Justin Smith Morrill Homestead of boards highlighting the work of Olmsted throughout the United States including Vermont.

## SHELBURNE FARMS TOURS

The Vermont Chapter sponsored a walking tour of Shelburne Farms in June, 2022 as part of the Olmsted 200 celebration. Patricia O'Donnell, FASLA, and Greg DeVries, ASLA, of Heritage Landscapes led the tour, which focused on the Olmsted features in the Shelburne Farms Landscape. Their walk, which went from the Visitor Center to the Inn, highlighted many of the extant Olmsted features that can still be seen in the landscape today, as well as new features that have been added in the Olmsted style. The tour was limited to 25 people, and was filled quickly.



Some highlights that participants shared were focused on the small details in design that typically go unnoticed as an intentional design intent. For example, the grass along drives and paths are often 'pillowed' to hide the view of the paths and to create a sense of continuous fields. Other notable tour stops included the walking path leading into the farm to highlight new swales with varying distances from the edge of a new path, and new plantings at the 'No T' intersections based on the original plantings observed in old aerial photos. Other stops at the Farm Barn and along the way to the Inn highlighted additional important Olmsted features.

The tour ended with refreshments on the north porch of the Inn provided by VTASLA.

The tour was so popular that Shelburne Farms asked if it could be done a second time. Patricia and Greg agreed, and the second tour in September was expanded to allow more participants, and was again fully booked. To not only have a landscape such as Shelburne Farms so close to home but also have local experts is an incredible opportunity that we feel grateful for, and hope to participate in more in the future!



Shelburne Farms tour crowd led by Patricia O'Donnell and Greg DeVries

## FREDERICK LAW OLMSTED EXHIBITS

As part of the Olmsted 200th year celebration, VTASLA helped organize an exhibit at the Guilford rest area highlighting the work of Olmsted throughout the United States including Vermont. The exhibit was compiled and produced by the Oak Springs Garden Foundation in association with the National Association of Olmsted Parks (NAOP). The exhibit has been installed in the Rutland Free Library for the month of October and at the Justin Morrill Historic Site.

In addition to the series of panels created by Olmsted 200, VTASLA developed a board to highlight Olmsted's connection to our state! The panel highlight Olmsted's project inventory in Vermont from 1884 - 1975. Olmsted's connection to Vermont began with the connection to Senator Justin Morrill, who invited Olmsted to design the U.S. Capitol grounds in 1873. Soon after his work continued for drawings of UVM's Billings Library in 1884 and the "Farm, Park, and Forest" concept for Shelburne farms. Other notable projects continued through the Olmsted Brothers firm, which enjoyed waves of activity into the 20th century with projects at the Vermont Sanatorium (Vermont Police Academy) in Pittsford and Manchester's Dellwood Cemetery and the Wyndhurst estate. The firm designed landscapes for institutions and other project types through 1975 including the West Rutland Library, Fort Ethan Allen in Colchester, National Carbon (Energizer Battery) in St. Albans, and National Life Insurance in Montpelier.

VTASLA hopes that these exhibits across Vermont help educate about the impact, potential, and breath of work landscape architects have in a community.

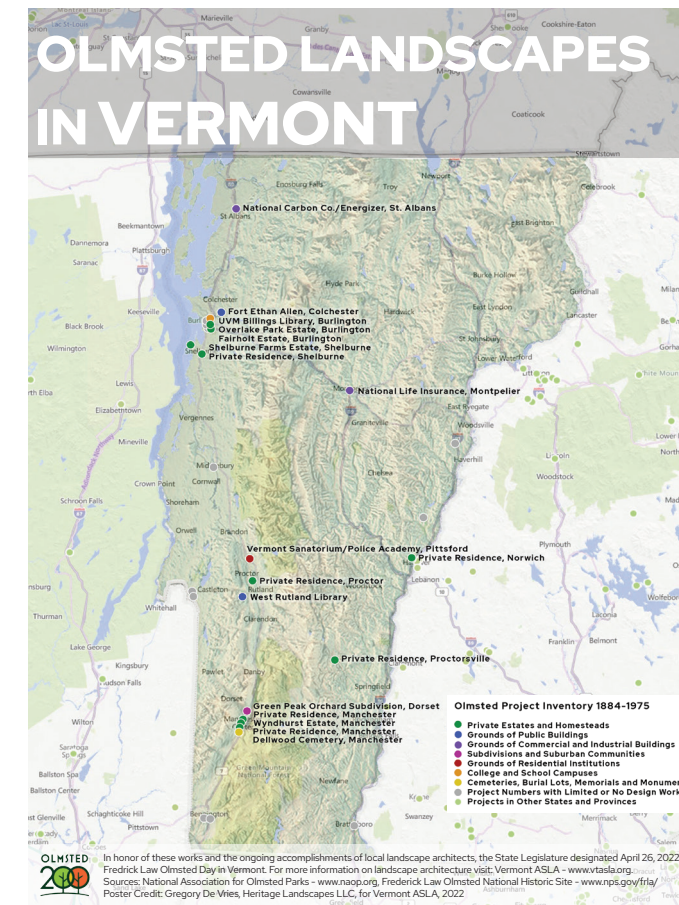
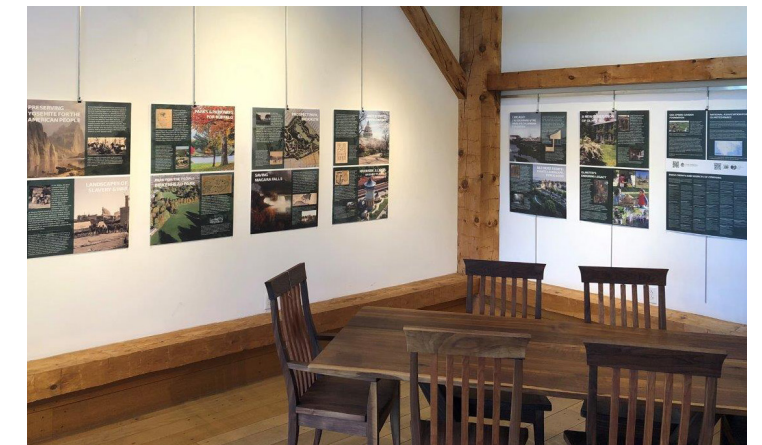


Exhibit posters hung in Rutland Free Library, Guilford Rest Area, and Justin Morrill Historic Site.



# PERMEABLE

## Without Compromise



**UNILOCK**  
PAVERS & WALLS

UNILOCK.COM  
1-800-UNILOCK

CALL FOR MORE INFORMATION AND SAMPLES TODAY



**TROWEL  
TRADES  
SUPPLY**  
A GHS COMPANY

## ARCHITECTURE AND DESIGN FILM SERIES

VTASLA is proud to continue to support the A&D Film Series! The Architecture & Design Film Series engages, provokes, and inspires the community by exploring the impact and importance of design and beauty in our lives. We invite you to watch these films in hopes that these creative offerings will broaden awareness, foster connections, spark new ideas, and ultimately build momentum towards positive action.

A+D Season 10 returns to live screenings at Contois Auditorium in Burlington and 118 Elliot in Brattleboro. A same day virtual screenings will be available via the A+D homepage. Events are once a month, September 2022 through April 2023, and free to the public.

For a complete listing of screenings, dates, and information visit their website:  
<https://adfilmseries.org/films/>

Welcome to Season 10 of the Architecture + Design Film Series. We are excited to be hosting in-person screenings again along with same-day online viewing.

The essence of design lies in its profound ability to affect how we think about and experience the world.

The Architecture & Design Film Series engages, provokes and inspires the community by exploring the impact and importance of design and beauty in our lives.

We invite you to join us for thoughtful discussion and light refreshments in hopes that this creative gathering will broaden awareness, foster connections, spark new ideas, and ultimately build momentum towards positive action.

FREE MONTHLY SCREENINGS

## Architecture + Design Film Series

THANK YOU SPONSORS



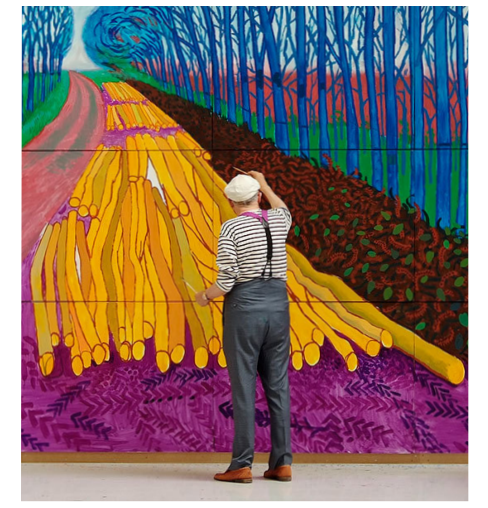
**ADDITIONAL SUPPORT:** Roland Batten Fund, Lynda McIntyre, Alden Cadwell, Dan Snow Stoneworks, Douglas Sweets, Casey Blanchard, Pat Howell & Mel Martin, Rolf Kielman & Stevie Spencer, Sareet Rosenstein, Growald Family Fund, Ned & Kitty Daly, Barbara Lipps, Del Sheldon, Parker Croft, Hinterland Studio, and Anonymous donors.

BURLINGTONCITYARTS.ORG | ADFILMSERIES.ORG | 118ELLIOT.COM

FREE MONTHLY SCREENINGS

## Architecture + Design Film Series

CELEBRATING 10 YEARS!



BCA 118ELLIOT AIA Vermont

# OLMSTED AND AMERICA'S URBAN PARKS

As part of Olmsted 200, VTASLA collaborated with the A&D film series to screen 'Olmsted and America's Urban Parks', directed by Rebecca Messner.

151 years after Frederick Law Olmsted designed New York City's Central Park with Calvert Vaux, it remains an undisputed haven of tranquility amidst one of the largest, tallest, and most unnatural places on earth. Olmsted and America's Urban Parks, a one hour documentary, examines the formation of America's first great city parks in the late 19th century through the enigmatic eyes of Frederick Law Olmsted (1822 – 1903), visionary urban planner and landscape architect.

At the Burlington screening of the film, Greg De Vries, ASLA of Heritage Landscapes, LLC provided an introduction highlighting the breadth of the Olmsted Firm's work in Vermont.

The film was also screened at Shelburne Farms as a collaboration with VTASLA and Shelburne Farms.



# DOUG CROWELL LECTURE

VTASLA's 2022 Doug Crowell Lecture was once again a hit! Presented on Zoom, it featured a panel of Olmsted Experts moderated by VTASLA's own Patricia O'Donnell, FASLA. Panelist included Laurie Olin, FASLA, founding partner of the Olin Partnership, Marion Pressley, FASLA, of Pressley Associates, and Dede Petri, President of the National Association of Olmsted Parks, and CEO of Olmsted 200. Over 30 folks tuned into the lecture via Zoom.

The discussion focused around five questions posed by Patricia:

1. *The ideas of free and open parks for the diversity of peoples are entwined with the creation of Central Park, 1858; Prospect Park and parkways, 1865; Buffalo Parks system, 1869; Emerald Necklace Parks, 1884; and many more, of varying sizes for urban dwellers to uplift city life. How well did the ideas of inclusion work? Does this concept of shared public space resonate through time?*
2. *What aspects of Olmsted's public and civic works were important at the time they were created? How do they remain valuable today?*
3. *Olmsted legacy landscapes have evolved over time, what features and character retain the original design intent and continue to be valued, and in contrast, are there features that failed?*
4. *Do you think that Olmsted continue to influence the design professions?*
5. *What do Olmsted legacy landscapes offer for contemporary communities and their visitors now and into the future?*

The panelists used these queries as starting points for a lively discussion that touched on how Olmsted advanced the democratic experiment in the United States; he was an extremely lucky man that was in the right place at the right time; his writings helped to keep him the public eye, which caused much to be written about him during his lifetime; he rubbed elbows with the rich and famous and influenced them to support his causes, and much more. The lecture lasted for two hours and included comments and questions from the attendees. The lecture was recorded and can be viewed at [vtasla.org](http://vtasla.org).

The Doug Crowell Lecture is presented annually by the Vermont Chapter of the American Society of Landscape Architects. It is named after Doug Crowell, ASLA, a former chapter member who, shortly after he became President-Elect of the chapter, was diagnosed with a fast-moving cancer that soon took him from us. He was working on creating more educational opportunities for chapter members, as well as all Vermonters when he died. The Executive Board continued his efforts and created this annual public lecture and named after Doug in honor of his dedication to his profession and his work on behalf of the Chapter.



The Vermont Chapter of the American Society of Landscape Architects

The 2022 Doug Crowell Lecture

## Frederick Law Olmsted's Legacy

October 11, 2022, 7 PM - Zoom

Patricia O'Donnell, FASLA, Founding Partner, Heritage Landscapes, LLC

With

Laurie Olin, FASLA, Partner, the Olin Partnership

Dede Petri, President, the National Association of Olmsted Parks & Olmsted 200

Marion Pressley, FASLA, President, Pressley Associates Landscape Architects

LOW IMPACT PRODUCTS *for* HIGH PERFORMANCE LANDSCAPES



STABILIZED STONEDUST®  
TRUNKLINE TRAIL



BEACH NOURISHMENT SOLUTIONS  
NEWBURYPORT BEACH



CU STRUCTURAL SOIL®  
MAIN STREET USA



ENGINEERED SOILS  
HARVARD CAMPUS



ATHLETIC FIELD AND  
GOLF COURSE MATERIALS

BIORETENTION SOILS • FIBER SOILS • ROOTZONES • STABILIZED STONEDUST  
CU STRUCTURAL SOIL • INFIELD MIX • GREEN ROOF MEDIA



**READ**  
CUSTOM SOILS  
*Experience. Quality. Consistency.*

CONTACT US FOR PRODUCT SPECIFICATIONS,  
TESTING RESULTS, PROJECT ANALYSIS,  
AND PERSONALIZED QUOTES.

**JEFF TOOMEY**  
JEFF@READCUSTOMSOILS.COM  
603.235.8420

**READCUSTOMSOILS.COM**



**INTRODUCING DEVIN COLEMAN**



Devin Colman, Honorary Member, VTASLA, has been an unsung hero of landscape architecture for a number of years and helping the VTASLA chapter with various exhibits and activities. Through his work helping with preparing HALS reports for Vermont landscapes to assisting with the Olmsted 200 Vermont activities, the VTASLA Executive Committee felt he should be recognized for his contributions by awarding him a VTASLA Honorary membership. Thank you, Devin!

A Vermont resident since 2004, Devin Colman holds a B.A. in Art History from Colby College and a M.S. in Historic Preservation from the University of Vermont. For the past 15 years he has worked at the Vermont Division for Historic Preservation and serves as the State Architectural Historian. In that role, Devin has been able to focus attention on the importance of designed and vernacular landscapes in relation to historic buildings, sites, and structures. Projects include assisting with the 2016 nomination of the Hinesburg Town Forest to the National Register of Historic Places, making it the first town forest in the nation to be individually listed. Devin has collaborated with VTASLA on the submission of several Historic American Landscape Survey (HALS) reports to the National Park Service and has researched and written HALS reports on Fuller Park, Brattleboro; the Justin Morrill Homestead, Strafford; and Journey's End, Grafton. Devin is engaged in ongoing research into the work of Dan Kiley (including buildings and landscapes) throughout the state and helped coordinate The Landscape Architecture Legacy of Dan Kiley exhibit and related events in 2019 at the Henry Sheldon Museum in Middlebury. Most recently, he has begun exploring the life and work of landscape architect Elizabeth Dickerman Jones (d. 1991), who was the only trained female landscape architect working in Burlington in the mid-20th century. Devin and his family live in Burlington.





landscapeforms®

**A Modern Interpretation of Traditional Design**

Ashbery is a beautiful modern interpretation of historic forms in high-quality lighting that sparks an emotional connection to the past but performs, looks and feels authentic for our time. It brings together advanced LED technology and optics with an homage to traditional-style lights that have a special place in the American lexicon.

**Nadene Worth**, Vermont  
 1.800.430.6206 x 1325  
 nadene@landscapeforms.com

DESIGN. CULTURE. CRAFT.

SWANEY LIGHTING ASSOCIATES, INC.

Manufacturers Representative Serving Vermont, New Hampshire, Maine  
 www.Swaneylighting.com Office 207-883-7100  
 info@swaneylighting.com  
 Vermont - Chad@swaneylighting.com 802-363-0621

# For Denver, smart waste receptacles mean smart savings.



**VICTOR STANLEY RELAY™**

STREET LEVEL SENSING™ & WASTE CONTROL SERVICE

Bins equipped with Relay sensors provide the city of Denver with accurate, real-time data on fill level, area environmental conditions, pedestrian traffic and much more. This means more efficient collection, saving the city time and money on fewer unnecessary stops, and providing valuable insights for future planning.

**What can we do for your city?**

Contact Andrew Hosmer at [andrewh@victorstanley.com](mailto:andrewh@victorstanley.com)



VICTORSTANLEY.COM



# ASLA

## VERMONT