



ASLA
VERMONT



And we all go Zoom- Virtual Spring Chapter President's Council Meeting in April

SPRING '20 NEWSLETTER

Thank you to our 2020 Sponsors!!!

GRANITE SPONSOR



VICTOR STANLEY™

Create a timeless moment.®

SLATE SPONSOR



PANTON SPONSOR



PRESIDENT'S MESSAGE

JIM DONOVAN, FASLA
VTASLA CHAPTER PRESIDENT

Amazing how some many things have changed in the last few months. By now, we have all seen, read, received, and heard much about pandemics, racial injustice, climate action, economics, and more. I'm not sure I have anything new to say on these important topics that are shaping and reshaping our lives right now, so I'm going to use portions of a post that a friend posted on Facebook that is originally from the Daily Stoic. I found it particularly relevant for our small group of professionals in one of the smallest states in the USA.

It's tempting to tell yourself that we don't have a problem. That you don't have to get involved. This doesn't affect your community. It's not actually that big of a deal. I'm not an activist, you think. I don't want to step on anyone's toes, I don't want to make things political. Someone else can probably do a better job.

These are lies. And they are worse than just apathy or rationalization. We can commit injustices by doing nothing too. When we try to tell ourselves that this is not our fight, that this is not our problem, that someone else is more equipped to get involved than we are—that's what we are doing. We are not just allowing injustice to continue, we are committing a new injustice by abandoning fellow humans who are asking for our help. They need our capital, they need our bodies, they need our political pressure. That's how change happens. That's how things get done.

If you decide not to vote because voting seems so statistically insignificant, or you don't speak out, if you let things pass because you would rather avoid conflict, that might make your life a little more peaceful, but the result is an incremental increase in the suffering of others. By refusing to demand a solution, you are contributing to the problem. By refusing to fight for that solution, you are asking others to carry your part of the load. We have to do this together. We have to see it as our fight. Because it is.

How can we act, how can we help, how can we fight? At the very least, our plans and our designs must help solve issues of injustice and not perpetuate them, even unconsciously. There must be more each of us can do, and possible our Chapter can do, to push for equality for our state's minorities in our society, in our economy, in our health system, in our world. We must all be involved.

Please send me a quick email at jdonovan@gmavt.net to say that you will be involved in change. If you can, please suggest more in your email that each of us can do as landscape architects, and that our Chapter can do. Thanks for your commitment to our profession, our Chapter, and our world.

2020 CHAPTER ELECTIONS AND BYLAW CHANGES

RUNNING DOWN THE LIST OF NOMINEES

This year the VT ASLA Chapter Elections will occur in July. Over the past month the executive board has been seeking nominations from members interested in joining the Chapter leadership for the President-Elect, Secretary, or Member-at-Large Positions. Thankfully members have answered the call and we are looking forward to electing these members and having a full board again. Election ballots will come out via email shortly so keep an eye out for them.

As always, the Chapter is seeking volunteers to help in all aspects of the board including on Committees, planning events, and especially encouraging others to join!

Thomas Hand, ASLA / President- Elect



Tom has been a member of ASLA and on the board as Secretary since 2018. Over this brief period Tom has been exposed to all facets of both Chapter and National Leadership, attending the Annual Conference for the first time as well as Chapter President's Council Meetings. These experiences have motivated him

to take on more responsibility around Chapter leadership, continuing the important work of our Chapter including advocacy, membership growth, and public awareness. As a small state Tom wants to build personal relationships with all our members. Tom is a Landscape Architect with SE Group and lives in Stowe with his family.

Stephen Plunkard, FASLA / Secretary



Stephen has long been involved with ASLA having been a member since 1980. He has served the Chapter previously as Trustee, President, Past President, President Elect, Treasurer, Secretary and a Committee Member (!) Stephen is interested in becoming involved in the Chapter again and filling the Secretary position.

Stephen keeps busy doing volunteer work and teaching a course in the Architecture and Art Department at Norwich University. Stephen is a Fellow and has Emeritus Status with the ASLA.

Beau Doucette / Member-at-Large*



Beau is a dedicated and passionate individual who is excited to foster engagement and intrigue in landscape architecture throughout Vermont. A native Vermonter, his love of the outdoors is evident in his work and he provides thoughtful solutions with a detail-oriented mindset. Beau holds a BLA from

the University of Rhode Island and has been practicing for four years. His career started as a landscape designer at Activitas in Dedham, MA before moving back to Vermont. Beau works for SE Group in Burlington and is a licensed Landscape Architect.

*This is the new 1-year Member-at-Large position created by the By-Law changes.

UPCOMING CONSITUTION AND BYLAW CHANGES

In addition to the Board elections, our members will be voting on changes to our Chapter's Constitution and Bylaws. The changes have to do with the make up of the Executive Board and the responsibilities of each board member. The current Executive Board is proposing these changes to make a more cohesive Board that has better consistency from year to year and to allow the President a little more time to undertake actions and actually see some results. The edits focus in particular on these three things:

- Change the President's term to two years from one year, with one additional year as President Elect and one additional year as Past President.
- Add a new one-year term Member-at-Large position.
- Redistribute and redefine duties and responsibilities that are now assigned in particular to the President Elect and the Past President, to account for the fact that these positions will only be a part of the make of the Executive Board every other year.

Modifications to our Constitution and Bylaws must be approved by the full members of the Chapter. I'm hoping as many of you as possible will vote, both for our new EB members as well as the modifications to the Constitution and Bylaws. If you have read this far, I'd appreciate your commitment to vote when the ballots come out in July. PLEASE, take a few seconds to email me at jdonovan@gmavt.net and just say "I'll vote!" Thanks!

CONFERENCE ON LANDSCAPE ARCHITECTURE

ASLA is still planning on holding the 2020 Conference on Landscape Architecture in person, assuming such meetings are possible. ASLA has indicated that they will be following the recommendation of the CDC in place at that time. If they find the need to cancel the meeting, they have promised full refunds for registrants. The information on cancelations on the registration page seems to contradict this, but it is only referring to the situation where the registrant opts to cancel for their own reasons when the CDC has indicated that it is OK to hold such meetings. SO, there is no reason to hold off registering if you want to attend! Visit www.aslaconference.com to register.

ASLA
MIA 2020
#ASLA2020

Conference on
Landscape Architecture
October 2-5
Miami Beach

Register Today & Save aslaconference.com

CPC / BOT SPRING MEETING RECAP

Meetings Occur Virtually, No Advocacy Day

The ASLA Chapter President's Council (CPC) and Board of Trustees (BOT) met virtually at the end of April. Normally these meetings occur every spring in Washington and are followed by a full advocacy day at the Capital. Due to COVID-19 the meetings were moved to an online format over several days to discuss the issue the society is addressing. Jim Donovan (President), Tom Hand (Secretary), and Gail Henderson-King (Trustee) attended the meetings for the Vermont Chapter.

CPC MEETING RECAP

The Chapter President's Council meeting is an opportunity to hear updates at both the National and Chapter levels as well as plan for the upcoming year. At the National Level ASLA is working on the following initiatives:

COVID-19 Updates

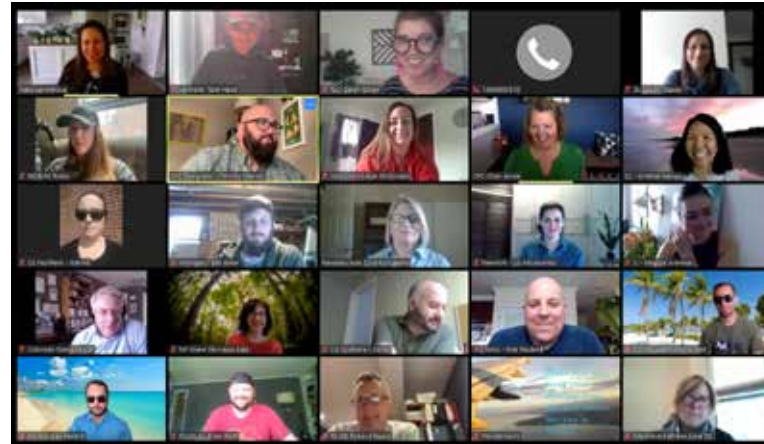
- ASLA is sending out weekly updates about COVID-19 including general guidance as well as member resources, business resources, and relief opportunities.
- The ASLA Center in Washington remains closed to in-person meetings.
- ASLA is updating the Standard Contract for LA's to address COVID-19.
- ASLA is offering several ways to maintain membership if affected by financial hardship due to the pandemic including not lapsing members beginning in January, offering monthly payment plans, switching to limited membership status, or applying for a membership waiver.

Federal Advocacy Update

- ASLA Supports the following federal legislation and encourages members to advocate by writing to their leaders in Senate and Congress.
 - o Living Shorelines Act,
 - o TREES Act,
 - o Green Roofs for Public Schools Act, and
 - o Great American Outdoors Act (see separate article for more information)

STEM Designation

- ASLA continues to work on the initiative to include Landscape Architecture under the STEM designation, working with program managers and congressional leaders.



The new normal- CPC members meeting in April via Zoom to discuss current national and local issues. The Fall CPC/BOT meetings will occur at the ASLA Conference in Miami.

- Unveiled the STEM case studies which looked at thirteen LA projects through the lens of STEM

Olmsted 200th Celebration

- ASLA part of coalition planning for the bicentennial celebration of Frederick Law Olmsted along with the National Association for Olmsted Parks
- The bicentennial is in 2022 with activities being planned throughout 2021.

Student Membership Fee

- ALSA is proposed to the BOT who voted to approve the removal of all Student Membership Fees
- Encourages students to join and have access to member resources, sign up for the mentorship program, and become involved in student and state chapters.

BOT MEETING RECAP

The ASLA Board of Trustees (BOT) met remotely due to the pandemic at the end of April. It was agreed that while we all missed meeting in person, we were able to successfully conduct business and even had break out groups to discuss topics and issues. Discussions and updates focused on the following:

- ASLA staff added COVID-19 resources for landscape architects on the asla.org website.
- World Landscape Architecture Month (WLAM) 2020 went very well. Many chapters participated and were reaching a large audience.

- The District of Columbia passed licensure regulations for landscape architects, which makes it the 51st jurisdiction in the country!

- ASLA is pursuing incorporating landscape architects in STEM designation. STEM Saturdays updates happened during the WLAM.

- The BOT passed several amendments to the ASLA Constitution and Bylaws that included adding one national student representative and one national associate representative to the BOT, changing vice presidents terms to 3 years based on current and past vice presidents, and waiver of dues due to hardship. The ASLA's public policy on waterways was amended. The BOT agreed to have free membership for all landscape architecture students. It was felt this is a good way to educate emerging landscape architects the value and importance of ASLA membership.

- There was considerable discussion on ASLA membership. The BOT discussed options on how to reach out to current and past members to understand what is important to them and how best ASLA can address their needs and desires moving forward.

- The Executive Vice President/CEO search is moving forward. There should be more updates on this over the next several months.

- The planning for the Conference on Landscape Architecture to be held in Miami October 2 through October 5 is underway.

As the VTASLA trustee to the BOT, I welcome any thoughts and ideas you have regarding ASLA. Please feel free to contact me at ghendersonking@whiteandburke.com. Stay safe and healthy!

ASLA COVID-19 RESOURCES

The VTASLA began meeting remotely in March for Executive Board meetings. Like many of you, we have been trying to juggle work, family, and keeping the Board going.

One huge benefit that is available to ASLA members during this time are the resources and benefits provided by ASLA. Business resources, professional development opportunities, student and educator resources, guidance around Federal support, and even a business response survey. We encourage you to go to <https://www.asla.org/COVIDResources/> for more information and to see what is available.

American Society of Landscape Architects

JobLink | Member Login

About | News | Chapters | Conference and Events | Become a Landscape Architect | Join | Learn | Advocate | Practice | Shop

About

COVID-19 RESOURCES FOR ASLA MEMBERS

JobLink
Attract the Best and Brightest

ASLA
Activity Books
Sketch Your Future

Contact
ASLA Information Request
info@asla.org

Share this

Explore resources: [Business Resources](#) | [Professional Development Resources](#) | [Resources for Educators and Students](#) | [Resources from Chapters](#) | [Community Tools](#) | [Federal, State, and Local Resources](#)

AFTER COVID-19, WHAT'S NEXT FOR LANDSCAPE ARCHITECTURE?

by Rebecca Greenwald

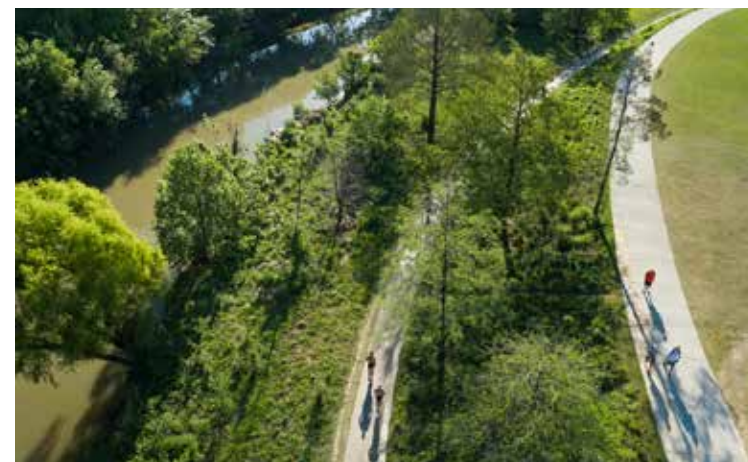
This article was originally published on Metropolismag.com.

As a Los Angeles resident who doesn't drive, navigating the city on foot and bike has always made me feel like I have the whole place to myself.

But over the last two months, Angelenos have been freckling the streets—it's like they've all discovered for the first time that they're capable of exploring this city without a car. While most beaches and trails in the city were shuttered (they have since re-opened), I noticed the LA River becoming the city's new "it spot" for socially distant hangouts. And in a city that lacks adequate public parks, people are turning any patch of grass or sidewalk—whether it's an elementary school yard, a traffic median, or a bit of concrete next to a parking lot—into a bit of respite from the madness.

In the midst of this pandemic, public space is decidedly having a moment. In the last month, Oakland, Seattle, Los Angeles, and Milwaukee have all announced ambitious new open streets programs to create more recreational space and facilitate safe social distancing.

Parks, plazas, and other outdoor urban assets are no longer being seen as superfluous, but instead finally being recognized as essential. And so are the masterminds behind them. Since the start of the pandemic, landscape architecture has become one of the few areas for cautious optimism within the wider architecture, engineering, and construction sector, which is poised for a downturn.



Buffalo Bayou Park, Houston, by SWA

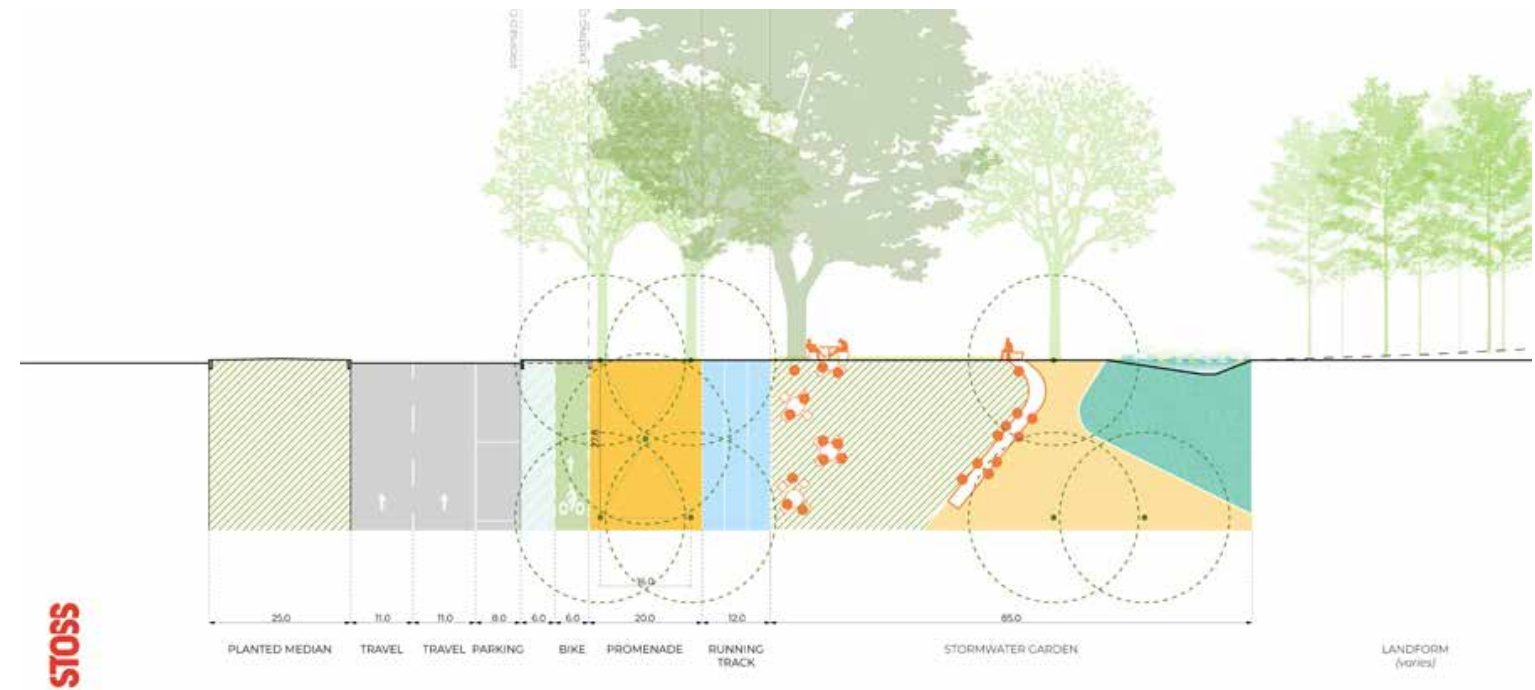
Metropolis spoke with leaders in landscape architecture to see how they're processing and responding to the health crisis. Here are the themes and ideas they're considering right now.

In March, shortly after the start of the crisis and the beginning of widespread shelter-in-place orders, an informal network of landscape architecture and urban planning firms—including Agency L+P, Asakura Robinson, City Architecture, OHM Advisors, NSpiregreen, and Interboro—convened to figure out what it means to conduct meaningful and sensitive public engagement in the era of coronavirus. The group has been discussing how to go about moving community consultation and engagement, public meetings, co-design sessions, and design charrettes onto digital platforms for the foreseeable future.

In many ways, this crisis is catalyzing an overdue shift in the tools landscape architects and planners use to gather residents' input, which has been the basis of co-design. For too long, the sector has relied on community engagement approaches and methodologies, which have inherent biases. "Public meetings have never really been inclusive," says Brie Hensold of Agency L+P. By using digital and other tools to widen the conversation and meet people where they are, she says, landscape architects can start to make this process more equitable.

While many ideas the group is discussing are nascent, the process is already starting to yield some novel results. For its Graffiti Pier project in Philadelphia, Studio Zewde is exploring using Instagram Live with DJ hosts to engage local creatives and street artists. Many firms are also turning to Zoom to conduct community surveys and focus groups, and exploring the potential of platforms such as WhatsApp groups and even podcasts to involve a broader swath of communities in the design and planning process.

Other firms are taking a productive pause from straightforward projects and are leveraging their expertise to help local communities in other ways. For its ongoing work designing public spaces across the rural Coachella Valley of California, KDI has developed online programming aimed at extending the social interaction afforded by parks and public plazas into the digital realm. That effort has resulted in an informative, weekly Facebook Live variety show and a mariachi car parade organized for towns in the firm's region, including North Shore, Mecca, and Oasis.



Space Planning Graphic by Chris Reed, STOSS

Chris Reed of landscape firm Stoss and Kinder Baumgardner from SWA predict a pivot away from the highly designed, highly programmed spaces that have become popular in landscape architecture in recent years. This shift could mean more expansive spaces that are large enough to safely accommodate many functions and people while social distancing.

"We're always advocating with clients that even though they're interested in events and destinations, we also need to design for those moments when those activities don't exist," says Reed.

Regarding its current projects, Stoss is already embedding social-distancing guidelines as a design innovation. For its work on a 2.5-mile stretch of waterfront in Edmonton, Canada, the firm is experimenting with designs that create different levels of linear pathways: two or three different tracks of varying width and size could accommodate multiple streams of people simultaneously and safely.

Landscape architects also foresee the "re-wilding" of our urban green spaces, as maintenance budgets and capabilities hang in limbo. Baumgardner believes this may demand landscape techniques that "can kind of back away and let [nature] do its thing."

While the last two months have demonstrated that innovative landscape architecture is a critical urban asset, strapped city budgets and changing funding priorities mean its future remains a question mark. Ashley Langworthy of Biederman Redevelopment Ventures points out that a murky funding

landscape will require designers to have a greater understanding and accountability around the business models, financial sustainability, and maintenance of their designs.

Landscape architects will also need to advocate and argue for the expansion of parks and recreation budgets, particularly to address the glaring inequities in parks and public space access, which the crisis has amplified. "How do we convince our elected leaders that this is important stuff?" says Baumgardner.

This hasn't always been the sector's strong suit. As Kathryn Gustafson once commented, "landscape architects are a shade-loving species."

And as pilot projects like the fast-spreading adoption of open streets allow cities to quickly test and implement solutions, designers and progressive urbanists will need to insist that they provide a permanent fix. "This is an unforeseen moment to [try] things that people have been thinking about for a while," says Reed. "And it's up to us as designers to be advocates for these ideas in the public sphere and with our clients."

Ryan Gravel, founder of the Atlanta Beltline and of urban design consultancy Sixpitch, remains optimistic that, if leveraged correctly, this moment can be a great time to push for ambitious and inclusive green space projects, and to build political momentum behind plans that are already in development: "I don't buy the long-term doom and gloom for cities. Obviously, there are near-term issues to deal with, and there will be implications. But I'm still confident in the future of cities."

ASLA OFFERING FREE PDH TO MEMBERS

MONTHLY WEBINARS OFFERED AS CONTINUING EDUCATION

Need Professional Development Hour credits for your license? Each month, ASLA will feature one on-demand webinar at no cost to all current members! Members must register for the Free PDH of the Month and pass the exam during the month it is featured in order to earn professional development hours.

Visit the ASLA Online Learning Center for more information and to sign up- <https://learn.asla.org/asla/>.



Patent Pending

Connecting since 1962.

INTRODUCING THE STELLA OF SUNNE™ COLLECTION.

Victor Stanley designs, engineers and manufactures timeless site furnishings that bring communities to life. Stella of Sunne™ features a classic, minimalist look inspired by Scandinavian design.

Contact Charlene Vera at charlenev@victorstanley.com

VICTOR STANLEY®

Create a timeless moment.®

VICTORSTANLEY.COM

'VERMONT SOLSTICE' PRINT STILL AVAILABLE

COMMISSIONED SABRA FIELD PRINT AVAILABLE FOR PURCHASE

The Vermont chapter of the American Society of Landscape Architects commissioned world-renowned Vermont printmaker Sabra Field in 2005 to create a piece to celebrate the beauty of Vermont's landscape. Best known for her design of the 1991 Vermont Bicentennial stamp, Sabra Field has been printmaking in Vermont for over 36 years. Her work has been the subject of over 50 special exhibits around the world, and she has received numerous awards for her contributions to the arts and to Vermont culture.

'Vermont Solstice' encapsulates the extent of Vermont's varied geography, from the Connecticut River on the eastern border to Lake Champlain on the west. Set during a snowy winter sunset, the stylized and highly detailed view includes natural landmarks such as Camel's Hump, as well as the state's trademark rolling hills and countryside pastures. Field also incorporated signs of humanity's influence on the land, including highways 89 and 91, and indicates settled areas through the use of small, shimmering lights.

Profits from the sale of this limited-edition, hand-signed print support the Vermont Chapter of the American Society of Landscape Architects. Prints measure 11.5" x 35" and cost \$300, plus shipping and handling. Please contact either info@vtasla.org or mike@tjboyle.com to order.



ASLA STUDENT MEMBERSHIP IS NOW FREE

During the annual Spring Meeting, the ASLA Board of Trustees voted to extend annual membership to all student and international students for free. This change took effect on May 1, 2020 for all members who qualify. Denis Nola, Vice-President of Membership for the Society was excited about the change since it allows more students to access online learning resources, get involved in mentoring programs, and become active members of local state chapters.

As students transition to emerging professionals they are more inclined to stay active and involved with the society. "Bringing all students nationwide into the ranks as members of ASLA allows us to develop a more effective mentorship program, demonstrate the value of ASLA membership, and to help them grow into emerging professionals," Interested students can find more information out on the ASLA Student Membership Website at <https://www.asla.org/lastudents.aspx>.

- Free Student Membership Benefits**
- Digital subscription to award-winning Landscape Architecture Magazine (LAM).
 - Membership in one of 20 Professional Practice Networks (PPNs).
 - Access to ASLA's new mentorship program.
 - Free access to LAM archive dating back to 1900 at JSTOR.
 - Access to Diversity, Equity, and Inclusion resources.
 - Virtual Portfolio Review
 - Mentorship Program

ASLA STATEMENT ON RACIAL INJUSTICE

VTASLA SUPPORTS UTILIZING OUR PROFESSION TO PROMOTE RACIAL EQUITY

The following is a statement from National ASLA following the development of national unrest over the death of George Floyd. The VTASLA Chapter supports engaging in conversations and utilizing our profession to promote positive and equitable planning and design for all communities.

“The American Society of Landscape Architects (ASLA) joins millions of people around the world in mourning the death of George Floyd, a black man who was murdered by a police officer.

ASLA recognizes that the brutal systems of slavery and Jim Crowism have dehumanized black people and weakened their communities. We also acknowledge that the planning and design of the built environment, including landscape architecture, has often had a disproportionate adverse impact on black communities. Systemic racism in the built environment has taken many forms, including redlining, urban renewal, and disinvestment. Environmental injustices, including lack of equitable access to clean air and water and greater concentrations of pollution, continue to plague these communities. Further, gentrification and displacement make it impossible for black communities to continue to exist. The landscape architecture profession can play a critical role in reversing these trends.

Public spaces have always been a critically important platform for the protest movement and democratic change. They have also become sites of violent confrontation and oppression against the black community. It is important that ASLA and others amplify the black narrative of these spaces.

ASLA stands in solidarity with black communities in the fight against racial injustice and police violence against black people. Moving forward, ASLA will deepen our partnership with the Black Landscape Architects Network (BlackLAN) to create a meaningful, sustainable plan of action to help guide the profession in addressing the wants and needs of black communities—no matter how much work and time it takes. Black Lives Matter.”



GREAT AMERICAN OUTDOOR ACT PASSES SENATE

BIPARTISAN SUPPORT FOR THE BILL

In the Winter Issue of the Chapter Newsletter we presented ASLA’s support of permanently funding the Land and Water Conservation Fund (LWCF) through upcoming legislation. On June 17 the Senate passed the Great American Outdoor Act which combines permanent funding for LWCF with another major legislation that allocates funds to address the National Park Service \$12 billion maintenance backlog. In addition the allocations will also be used to address deferred maintenance with the US Forest Service, Bureau of Land Management, US Fish and Wildlife, and the Bureau of Indian Education. Senator Sanders and Senator Leahy both supported the bill in the Senate, while Congressman Welch is supportive of the bill when it comes to the House. ASLA is encouraging members to reach out to thank the Senators and encourage the congressmen to support the funding bill.

This funding is a critical tool used to plan and design community parks, open spaces, and recreation areas. Here in Vermont the funding grants are used by cities, towns, and state agencies to support the creation and access to critical lands for public gathering and recreation. ASLA is part of the LWCF Coalition that supports the permanent federal funding of the LWCF.



Green Mountain National Forest

The 400,000-acre forest, which receives more than three million visitors annually, offers abundant recreational opportunities. While more than half of its visitors live within 50 miles, the forest is not exclusively a local gem. It is within a day's drive of 80 million people, who come from Albany, Boston, Montreal, New York City, and beyond.

In FY 2020, the forest seeks to acquire Lincoln Peak, a 619-acre inholding that will offer enhanced access for cross-country skiers, hikers, hunters, anglers, and wildlifewatchers. An allocation of \$350,000 from the Land and Water Conservation Fund is needed to protect the Lincoln Peak project area. With these funds, Green Mountain National Forest will acquire these two inholding tracts, offering enhanced recreational access to forest visitors while contributing to the state's vibrant outdoor recreation economy.

Photo: The Trust for Public Land

The LWCF Coalition website highlights several critical projects nationwide that are being supported by LWCF funding. The acquisition of Lincoln Peak as part of the Green Mountain National Forest is highlighted on the coalition's website due to the recreational benefits that will have for both Vermonter's but the population centers in surrounding cities who come to Vermont to recreate. (Image and Text courtesy the LWCF Website)

VTASLA CHAPTER AWARDS UPDATE

Our awards entries all came in right as everything shut down! We are finally getting the program back on track. Entries have been sent off to the Alaska Chapter for their jury review. They are working to do a remote jury, which in itself has its own challenges. We should have the results of the juries work in a few weeks.

Watch for further announcements as we make decisions on when, where and how to announce and celebrate our winners. Other Chapters have switched to virtual award ceremonies and we are reviewing their process and success (or lack thereof) and evaluating whether it might make sense for VTASLA to hold its own virtual award ceremony.

VTASLA SPONSORED ARCHITECTURE + DESIGN FILM SERIES

The Executive Board voted last year to sponsor the A+D Film Series that takes place in Burlington and Brattleboro each year from September through April. The series explores one film a month focused on Architecture or Design. These independent films are intriguing and thought provoking and always an enjoyable experience. As part of sponsorship we were able to submit a promotional image for our group that displays prior to the film. We chose to submit a crisp and simple graphic that conveys the breadth of work we do as professionals in the state. We look forward to sponsoring the next film series and hope to see you there!



NEWS. NEWS. NEWS.

EQUITY, JUSTICE, AND LANDSCAPE

On June 19, the Black Landscape Architects Network (BlackLAN) hosted a panel discussion on disparities in the living conditions of people based on race, class, and gender. Almost 1,000 people attended the webinar, with a significant number staying afterwards to participate in the breakout discussions.

Thanks to Land8 and Anova, the session was recorded for those who were not able to attend. Multidisciplinary panelists offered insight into what equity and justice mean, especially when working in economically, socio-culturally, and ecologically unjust places. Participants were invited to envision new strategies for equipping landscape architects to meet these grand challenges. Due to overwhelming demand and limited space, Land8 is offering a follow-up opportunity for breakout sessions on June 26 (beginning at 2 p.m.).



Join the discussion on Zoom!
When: June 26, 2 p.m.
Meeting ID: 839 1525 7419 / Password: Land8
Dial-in option: (929) 205-6099
Meeting ID: 839 1525 7419
Dial-In Password: 276811

BlackLAN OFFERS NEWSLETTER

In response to community interest, The Black Landscape Architects Network (BlackLAN) is now offering a newsletter. You can view the June 2020 edition here. You can contact blacklanetwork@gmail.com to sign up for the newsletter or inquire about joining BlackLAN.

ASLA COMMITTEE OPPORTUNITY

If you would like to get involved with national ASLA joining a committee is a great way to do so. President-elect Thomas Mroz, FASLA, will be considering appointments for committee service during his term as ASLA president (which begins October 6). To volunteer for service on one or more ASLA committees, please fill out the committee appointment form at <https://www.surveymonkey.com/r/PVL2779>. The application deadline is July 24.

WEEKLY WEBINARS

ASLA Connecticut is offering free webinars on Thursdays at 1 p.m. The webinars have already started, but they will resume on July 9 with Security Lighting for People & Property. Other upcoming webinars include All Ages, All Abilities, All the Time on July 16 and Best Practices for Managing Trees During Design & Construction on July 23. Please visit the chapter website www.ctasla.org for more info and to register.